



C2C | Spine[™]
System

 **MJ SURGICAL[®]**

Implanting Trust

www.mjsurgical.com

SingleLock®
Spinal Fixation System



IMPLANTS

C101
Monoaxial Screw Ø4.5mm

Titanium	Length
C101.25	25mm
C101.30	30mm
C101.35	35mm
C101.40	40mm
C101.45	45mm
C101.50	50mm

C102
Monoaxial Screw Ø5.5mm

Titanium	Length
C102.25	25mm
C102.30	30mm
C102.35	35mm
C102.40	40mm
C102.45	45mm
C102.50	50mm

C103
Monoaxial Screw Ø6.5mm

Titanium	Length
C103.25	25mm
C103.30	30mm
C103.35	35mm
C103.40	40mm
C103.45	45mm
C103.50	50mm

C104
Monoaxial Screw Ø7.5mm

Titanium	Length
C104.25	25mm
C104.30	30mm
C104.35	35mm
C104.40	40mm
C104.45	45mm
C104.50	50mm

SingleLock®
Spinal Fixation System



C105
Polyaxial Screw Ø4.5mm

Titanium	Length
C105.25	25mm
C105.30	30mm
C105.35	35mm
C105.40	40mm
C105.45	45mm
C105.50	50mm

C106
Polyaxial Screw Ø5.5mm

Titanium	Length
C106.25	25mm
C106.30	30mm
C106.35	35mm
C106.40	40mm
C106.45	45mm
C106.50	50mm

C107
Polyaxial Screw Ø6.5mm

Titanium	Length
C107.25	25mm
C107.30	30mm
C107.35	35mm
C107.40	40mm
C107.45	45mm
C107.50	50mm

C108
Polyaxial Screw Ø7.5mm

Titanium	Length
C108.25	25mm
C108.30	30mm
C108.35	35mm
C108.40	40mm
C108.45	45mm
C108.50	50mm

SingleLock®
Spinal Fixation System



C132
Monoaxial Reduction
Screw Ø4.5mm

Titanium	Length
C132.25	25mm
C132.30	30mm
C132.35	35mm
C132.40	40mm
C132.45	45mm
C132.50	50mm

C130
Monoaxial Reduction
Screw Ø5.5mm

Titanium	Length
C130.25	25mm
C130.30	30mm
C130.35	35mm
C130.40	40mm
C130.45	45mm
C130.50	50mm

C131
Monoaxial Reduction
Screw Ø6.5mm

Titanium	Length
C131.25	25mm
C131.30	30mm
C131.35	35mm
C131.40	40mm
C131.45	45mm
C131.50	50mm



C109
Polyaxial Reduction
Screw Ø5.5mm

Titanium	Length
C109.25	25mm
C109.30	30mm
C109.35	35mm
C109.40	40mm
C109.45	45mm
C109.50	50mm

C114
Polyaxial Reduction
Screw Ø4.5mm

Titanium	Length
C114.25	25mm
C114.30	30mm
C114.35	35mm
C114.40	40mm
C114.45	45mm
C114.50	50mm

C110
Polyaxial Reduction
Screw Ø6.5mm

Titanium	Length
C110.25	25mm
C110.30	30mm
C110.35	35mm
C110.40	40mm
C110.45	45mm
C110.50	50mm

SingleLock®
Spinal Fixation System



C107
Iliac Screw Ø6.5mm

Titanium	Length
C107.55	55mm
C107.60	60mm
C107.65	65mm
C107.70	70mm
C107.75	75mm
C107.80	80mm
C107.85	85mm
C107.90	90mm
C107.95	95mm
C107.100	100mm

C108
Iliac Screw Ø7.5mm

Titanium	Length
C108.55	55mm
C108.60	60mm
C108.65	65mm
C108.70	70mm
C108.75	75mm
C108.80	80mm
C108.85	85mm
C108.90	90mm
C108.95	95mm
C108.100	100mm



C111
Rod Ø5.5mm

Titanium	Length
C111.050	050mm
C111.060	060mm
C111.070	070mm
C111.080	080mm
C111.090	090mm
C111.100	100mm
C111.110	110mm
C111.120	120mm
C111.130	130mm

Titanium	Length
C111.140	140mm
C111.150	150mm
C111.200	200mm
C111.250	250mm
C111.300	300mm
C111.350	350mm
C111.400	400mm
C111.450	450mm
C111.500	500mm

SingleLock®
Spinal Fixation System

IMPLANTS

C147
Cobalt Chromium Rod Ø5.5mm (CoCr)

CoCr	Length	CoCr	Length
C147.300	300mm	C147.600	600mm



C124
Tapered Rod Ø3.5mm/Ø5.5mm

Material : Titanium



C112
Pedicle Crosslink Connector

Titanium	Size
C112.S	Small
C112.M	Medium
C112.L	Large



C123
Lateral Offset Connector

Titanium	Length
C123.20	20mm
C123.25	25mm
C123.30	30mm
C123.35	35mm



C125
Transverse Connector
Ø5.5 mm

Material : Titanium



C126
Transverse Connector
Connecting Rod Ø3.0mm

Titanium	Length
C126.080	080mm
C126.100	100mm

SingleLock®
Spinal Fixation System



C115
Pedicle Hook

Material : Titanium



C116
Laminar Hook
Reduced Distance

Material : Titanium



C117
Laminar Hook
Angle Blade

Material : Titanium



C118
Laminar Hook
Narrow Blade

Material : Titanium



C113
Staple

Material : Titanium

Solitaire
Dual Thread Screw



C128
Dual Threaded Polyaxial
Screw Ø5.5mm

Titanium	Length
C128.25	25mm
C128.30	30mm
C128.35	35mm
C128.40	40mm
C128.45	45mm
C128.50	50mm

C127
Dual Threaded Polyaxial
Screw Ø4.5mm

Titanium	Length
C127.25	25mm
C127.30	30mm
C127.35	35mm
C127.40	40mm
C127.45	45mm
C127.50	50mm

C129
Dual Threaded Polyaxial
Screw Ø6.5mm

Titanium	Length
C129.25	25mm
C129.30	30mm
C129.35	35mm
C129.40	40mm
C129.45	45mm
C129.50	50mm

DELTA-FEN
Fenestrated Screw for Osteoporosis Bone



C138
Fenestrated Polyaxial
Screw Ø5.5mm

Titanium	Length
C138.25	25mm
C138.30	30mm
C138.35	35mm
C138.40	40mm
C138.45	45mm
C138.50	50mm

C139
Fenestrated Polyaxial
Screw Ø6.5mm

Titanium	Length
C139.25	25mm
C139.30	30mm
C139.35	35mm
C139.40	40mm
C139.45	45mm
C139.50	50mm

Singlelock-Osteo

HA Coated Screw for Osteoporosis Bone



C119
HA Coated Monoaxial
Screw Ø5.5mm

Titanium	Length
C119.25	25mm
C119.30	30mm
C119.35	35mm
C119.40	40mm
C119.45	45mm
C119.50	50mm

C141
HA Coated Monoaxial
Screw Ø4.5mm

Titanium	Length
C141.25	25mm
C141.30	30mm
C141.35	35mm
C141.40	40mm
C141.45	45mm
C141.50	50mm

C120
HA Coated Monoaxial
Screw Ø6.5mm

Titanium	Length
C120.25	25mm
C120.30	30mm
C120.35	35mm
C120.40	40mm
C120.45	45mm
C120.50	50mm



C121
HA Coated Polyaxial
Screw Ø5.5mm

Titanium	Length
C121.25	25mm
C121.30	30mm
C121.35	35mm
C121.40	40mm
C121.45	45mm
C121.50	50mm

C142
HA Coated Polyaxial
Screw Ø4.5mm

Titanium	Length
C142.25	25mm
C142.30	30mm
C142.35	35mm
C142.40	40mm
C142.45	45mm
C142.50	50mm

C122
HA Coated Polyaxial
Screw Ø6.5 mm

Titanium	Length
C122.25	25mm
C122.30	30mm
C122.35	35mm
C122.40	40mm
C122.45	45mm
C122.50	50mm

Merit

Occipital Cervical Fixation System



C202 Posterior Cervical Screw Ø4.0mm

Titanium	Length
C202.10	10mm
C202.12	12mm
C202.14	14mm
C202.16	16mm
C202.18	18mm
C202.20	20mm
C202.22	22mm
C202.24	24mm
C202.26	26mm
C202.28	28mm
C202.30	30mm
C202.32	32mm
C202.34	34mm
C202.36	36mm
C202.38	38mm
C202.40	40mm

C201 Posterior Cervical Screw Ø3.5mm

Titanium	Length
C201.10	10mm
C201.12	12mm
C201.14	14mm
C201.16	16mm
C201.18	18mm
C201.20	20mm
C201.22	22mm
C201.24	24mm
C201.26	26mm
C201.28	28mm
C201.30	30mm



C217 Posterior Cervical Screw (Partially Threaded) Ø4.0mm

Titanium	Length
C217.26	26mm
C217.28	28mm
C217.30	30mm
C217.32	32mm
C217.34	34mm
C217.36	36mm
C217.38	38mm
C217.40	40mm

Merit

Occipital Cervical Fixation System



C205
Occipital Cervical Midline
Fixation Plate

Titanium	Size
C205.S	Small
C205.M	Medium
C205.L	Large



C206
Adjustable
Occipital Plate

Material : Titanium



C207
Occipital Plate Screw

Titanium	Length
C207.08	08mm
C207.10	10mm
C207.12	12mm
C207.14	14mm
C207.16	16mm
C207.18	18mm



C208
Occipital Cervical
Pre Curved Rod

Titanium	Length
C208.200	200mm



C209
Occipital Cervical
Plate with Rod

Titanium	Length
C209.200	200mm

Merit

Occipital Cervical Fixation System



C203 Rod Ø3.5mm

Titanium	Length
C203.025	025mm
C203.030	030mm
C203.040	040mm
C203.050	050mm
C203.060	060mm

Titanium	Length
C203.070	070mm
C203.080	080mm
C203.090	090mm
C203.100	100mm
C203.200	200mm
C203.250	250mm



C211 Parallel Connector

Titanium	Size
C211.01	3.5X5.5
C211.02	5.5X5.5



C212 Offset Dominos

Titanium	Size
C212.01	3.5X5.5
C212.02	5.5X5.5



C210 Hook

Titanium	Length
C210.4.0	4.0mm
C210.6.5	6.5mm



C213 Transverse Connector Ø3.5 mm

Material : Titanium

NEXUS
Laminoplasty Plate System



C221
Posterior Laminar Plate
(Lateral+Long Hole)

Titanium	Size
C221.31	31mm
C221.33	33mm
C221.35	35mm



C222
Posterior Laminar Plate
(Lateral Hole)

Titanium	Size
C222.29	29mm
C222.31	31mm
C222.33	33mm



C223
Posterior Laminar Plate
(Long+Double Hole)

Titanium	Size
C223.29	29mm
C223.31	31mm
C223.33	33mm



C224
Posterior Laminar Plate
(Lateral+Double Hole)

Titanium	Size
C224.27	27mm
C224.29	29mm
C224.31	31mm

NEXUS
Laminoplasty Plate System



C225
Posterior Laminar
Straight Plate

Titanium	Size
C225.40	40mm
C225.45	45mm
C225.50	50mm
C225.55	55mm



C226
Laminar Self Tapping Screw

Titanium	Length
C226.06	06mm
C226.08	08mm
C226.10	10mm
C226.12	12mm

OT 
Odontoid and
Transarticular Screw Fixation



C218
Odontoid Screw
(Partially Threaded)

Titanium	Length
C218.30	30mm
C218.35	35mm
C218.40	40mm
C218.45	45mm
C218.50	50mm
C218.55	55mm
C218.60	60mm
C218.65	65mm



C219
C1/C2 Screw
(Fully Threaded)

Titanium	Length
C219.30	30mm
C219.35	35mm
C219.40	40mm
C219.45	45mm
C219.50	50mm
C219.55	55mm
C219.60	60mm
C219.65	65mm



Anterior Cervical Plating System



**C301
Cervical Plate**

Titanium	Length
C301.20	20mm
C301.22	22mm
C301.25	25mm
C301.27	27mm
C301.30	30mm
C301.32	32mm
C301.35	35mm
C301.38	38mm
C301.41	41mm
C301.44	44mm
C301.47	47mm
C301.50	50mm
C301.53	53mm
C301.56	56mm
C301.59	59mm
C301.62	62mm



Titanium	Length
C301.65	65mm
C301.68	68mm
C301.71	71mm
C301.74	74mm
C301.77	77mm
C301.80	80mm



C302
Self Tapping Screw for
Cervical Plate Ø4.0 mm

Titanium	Length
C302.12	12mm
C302.13	13mm
C302.14	14mm
C302.15	15mm
C302.16	16mm
C302.17	17mm
C302.18	18mm
C302.19	19mm
C302.20	20mm



C303
Self Drilling Screw for
Cervical Plate Ø4.0mm

Titanium	Length
C303.12	12mm
C303.13	13mm
C303.14	14mm
C303.15	15mm
C303.16	16mm
C303.17	17mm
C303.18	18mm
C303.19	19mm
C303.20	20mm



C304
Emergency Screw for
Cervical Plate Ø4.3mm

Titanium	Length
C304.12	12mm
C304.13	13mm
C304.14	14mm
C304.15	15mm



**C401
Eco Cage**

Titanium	Dia.	Length
C401.08	08mm	20 to 100mm
C401.10	10mm	20 to 100mm
C401.12	12mm	20 to 100mm
C401.14	14mm	20 to 100mm
C401.16	16mm	20 to 100mm
C401.18	18mm	20 to 100mm



FILLER-BN
Lumbar Interbody Fusion Device



**C402
TLIF Cage**

Titanium	Dia.	Length
C402.07x25	07mm	25mm
C402.08x25	08mm	25mm
C402.09x25	09mm	25mm
C402.10x25	10mm	25mm
C402.11x25	11mm	25mm
C402.12x25	12mm	25mm
C402.13x25	13mm	25mm
C402.14x25	14mm	25mm
C402.16x25	16mm	25mm

Titanium	Dia.	Length
C402.07x30	07mm	30mm
C402.08x30	08mm	30mm
C402.09x30	09mm	30mm
C402.10x30	10mm	30mm
C402.11x30	11mm	30mm
C402.12x30	12mm	30mm
C402.13x30	13mm	30mm
C402.14x30	14mm	30mm
C402.16x30	16mm	30mm

**C403
TLIF Cage**

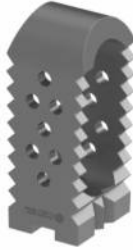


PEEK	Dia.	Length
C403.07x25	07mm	25mm
C403.08x25	08mm	25mm
C403.09x25	09mm	25mm
C403.10x25	10mm	25mm
C403.11x25	11mm	25mm
C403.12x25	12mm	25mm

Material : PEEK

PEEK	Dia.	Length
C403.07x30	07mm	30mm
C403.08x30	08mm	30mm
C403.09x30	09mm	30mm
C403.10x30	10mm	30mm
C403.11x30	11mm	30mm
C403.12x30	12mm	30mm

INFUZE
Lumbar Interbody Fusion Device



**C404
PLIF Cage**

Titanium	Dia.	Length
C404.07x20	07mm	20mm
C404.08x20	08mm	20mm
C404.09x20	09mm	20mm
C404.10x20	10mm	20mm
C404.11x20	11mm	20mm
C404.12x20	12mm	20mm

Titanium	Dia.	Length
C404.07x25	07mm	25mm
C404.08x25	08mm	25mm
C404.09x25	09mm	25mm
C404.10x25	10mm	25mm
C404.11x25	11mm	25mm
C404.12x25	12mm	25mm

FILLER-BT
Lumbar Interbody Fusion Device



**C405
PLIF Cage (Bullet Type)**

Titanium	Dia.	Length
C405.07x20	07mm	20mm
C405.08x20	08mm	20mm
C405.09x20	09mm	20mm
C405.10x20	10mm	20mm
C405.11x20	11mm	20mm
C405.12x20	12mm	20mm
C405.13x20	13mm	20mm
C405.14x20	14mm	20mm
C405.16x20	16mm	20mm

Titanium	Dia.	Length
C405.07x25	07mm	25mm
C405.08x25	08mm	25mm
C405.09x25	09mm	25mm
C405.10x25	10mm	25mm
C405.11x25	11mm	25mm
C405.12x25	12mm	25mm
C405.13x25	13mm	25mm
C405.14x25	14mm	25mm
C405.16x25	16mm	25mm

Titanium	Dia.	Length
C405.07x30	07mm	30mm
C405.08x30	08mm	30mm
C405.09x30	09mm	30mm
C405.10x30	10mm	30mm
C405.11x30	11mm	30mm
C405.12x30	12mm	30mm
C405.13x30	13mm	30mm
C405.14x30	14mm	30mm
C405.16x30	16mm	30mm

**C406
PLIF Cage**



PEEK	Dia.	Length
C406.07x20	07mm	20mm
C406.08x20	08mm	20mm
C406.09x20	09mm	20mm
C406.10x20	10mm	20mm
C406.11x20	11mm	20mm
C406.12x20	12mm	20mm

Material : PEEK

PEEK	Dia.	Length
C406.07x25	07mm	25mm
C406.08x25	08mm	25mm
C406.09x25	09mm	25mm
C406.10x25	10mm	25mm
C406.11x25	11mm	25mm
C406.12x25	12mm	25mm

HORIZON

Lordotic PLIF Cage



C426 Lordotic PLIF Cage

0°

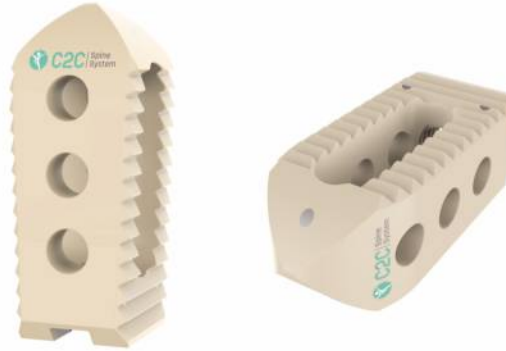
Titanium	Dia.	Length
C426.07X20-0°	07mm	20mm
C426.08X20-0°	08mm	20mm
C426.09X20-0°	09mm	20mm
C426.10X20-0°	10mm	20mm
C426.11X20-0°	11mm	20mm
C426.12X20-0°	12mm	20mm
C426.13X20-0°	13mm	20mm
C426.14X20-0°	14mm	20mm
C426.15X20-0°	15mm	20mm
C426.16X20-0°	16mm	20mm
C426.07X25-0°	07mm	25mm
C426.08X25-0°	08mm	25mm
C426.09X25-0°	09mm	25mm
C426.10X25-0°	10mm	25mm
C426.11X25-0°	11mm	25mm
C426.12X25-0°	12mm	25mm
C426.13X25-0°	13mm	25mm
C426.14X25-0°	14mm	25mm
C426.15X25-0°	15mm	25mm
C426.16X25-0°	16mm	25mm

4°

Titanium	Dia.	Length
C426.07X20-4°	07mm	20mm
C426.08X20-4°	08mm	20mm
C426.09X20-4°	09mm	20mm
C426.10X20-4°	10mm	20mm
C426.11X20-4°	11mm	20mm
C426.12X20-4°	12mm	20mm
C426.13X20-4°	13mm	20mm
C426.14X20-4°	14mm	20mm
C426.15X20-4°	15mm	20mm
C426.16X20-4°	16mm	20mm
C426.07X25-4°	07mm	25mm
C426.08X25-4°	08mm	25mm
C426.09X25-4°	09mm	25mm
C426.10X25-4°	10mm	25mm
C426.11X25-4°	11mm	25mm
C426.12X25-4°	12mm	25mm
C426.13X25-4°	13mm	25mm
C426.14X25-4°	14mm	25mm
C426.15X25-4°	15mm	25mm
C426.16X25-4°	16mm	25mm

HORIZON

Lordotic PLIF Cage



C427 Lordotic PLIF Cage

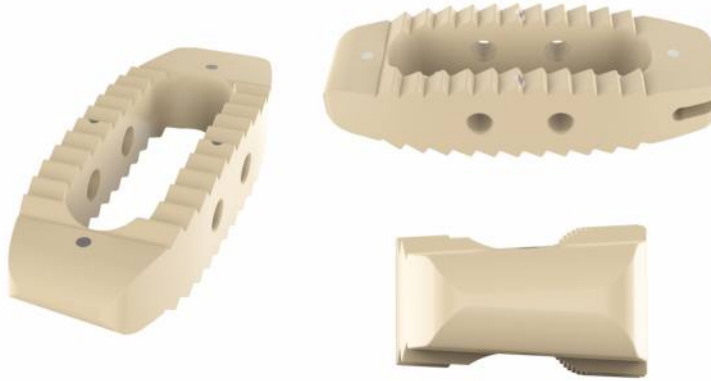
Material : PEEK

0°		
PEEK	Dia.	Length
C427.07X20-0°	07mm	20mm
C427.08X20-0°	08mm	20mm
C427.09X20-0°	09mm	20mm
C427.10X20-0°	10mm	20mm
C427.11X20-0°	11mm	20mm
C427.12X20-0°	12mm	20mm
C427.13X20-0°	13mm	20mm
C427.14X20-0°	14mm	20mm
C427.15X20-0°	15mm	20mm
C427.16X20-0°	16mm	20mm
C427.07X25-0°	07mm	25mm
C427.08X25-0°	08mm	25mm
C427.09X25-0°	09mm	25mm
C427.10X25-0°	10mm	25mm
C427.11X25-0°	11mm	25mm
C427.12X25-0°	12mm	25mm
C427.13X25-0°	13mm	25mm
C427.14X25-0°	14mm	25mm
C427.15X25-0°	15mm	25mm
C427.16X25-0°	16mm	25mm

4°		
PEEK	Dia.	Length
C427.07X20-4°	07mm	20mm
C427.08X20-4°	08mm	20mm
C427.09X20-4°	09mm	20mm
C427.10X20-4°	10mm	20mm
C427.11X20-4°	11mm	20mm
C427.12X20-4°	12mm	20mm
C427.13X20-4°	13mm	20mm
C427.14X20-4°	14mm	20mm
C427.15X20-4°	15mm	20mm
C427.16X20-4°	16mm	20mm
C427.07X25-4°	07mm	25mm
C427.08X25-4°	08mm	25mm
C427.09X25-4°	09mm	25mm
C427.10X25-4°	10mm	25mm
C427.11X25-4°	11mm	25mm
C427.12X25-4°	12mm	25mm
C427.13X25-4°	13mm	25mm
C427.14X25-4°	14mm	25mm
C427.15X25-4°	15mm	25mm
C427.16X25-4°	16mm	25mm

OLIF

Oblique Lumbar Interbody Fusion Device



C428
Oblique Lumbar Interbody Fusion Cage

Material : PEEK

0°

PEEK	Dia.	Length
C428.08X40-0°	08mm	40mm
C428.08X45-0°	08mm	45mm
C428.08X50-0°	08mm	50mm
C428.08X55-0°	08mm	55mm
C428.08X60-0°	08mm	60mm
C428.10X40-0°	10mm	40mm
C428.10X45-0°	10mm	45mm
C428.10X50-0°	10mm	50mm
C428.10X55-0°	10mm	55mm
C428.10X60-0°	10mm	60mm
C428.12X40-0°	12mm	40mm
C428.12X45-0°	12mm	45mm
C428.12X50-0°	12mm	50mm
C428.12X55-0°	12mm	55mm
C428.12X60-0°	12mm	60mm
C428.14X40-0°	14mm	40mm
C428.14X45-0°	14mm	45mm
C428.14X50-0°	14mm	50mm
C428.14X55-0°	14mm	55mm
C428.14X60-0°	14mm	60mm
C428.16X40-0°	16mm	40mm
C428.16X45-0°	16mm	45mm
C428.16X50-0°	16mm	50mm
C428.16X55-0°	16mm	55mm
C428.16X60-0°	16mm	60mm

6°

PEEK	Dia.	Length
C428.08X40-6°	08mm	40mm
C428.08X45-6°	08mm	45mm
C428.08X50-6°	08mm	50mm
C428.08X55-6°	08mm	55mm
C428.08X60-6°	08mm	60mm
C428.10X40-6°	10mm	40mm
C428.10X45-6°	10mm	45mm
C428.10X50-6°	10mm	50mm
C428.10X55-6°	10mm	55mm
C428.10X60-6°	10mm	60mm
C428.12X40-6°	12mm	40mm
C428.12X45-6°	12mm	45mm
C428.12X50-6°	12mm	50mm
C428.12X55-6°	12mm	55mm
C428.12X60-6°	12mm	60mm
C428.14X40-6°	14mm	40mm
C428.14X45-6°	14mm	45mm
C428.14X50-6°	14mm	50mm
C428.14X55-6°	14mm	55mm
C428.14X60-6°	14mm	60mm
C428.16X40-6°	16mm	40mm
C428.16X45-6°	16mm	45mm
C428.16X50-6°	16mm	50mm
C428.16X55-6°	16mm	55mm
C428.16X60-6°	16mm	60mm

12°

*Available on request

PEEK	Dia.	Length
C428.08X40-12°	08mm	40mm
C428.08X45-12°	08mm	45mm
C428.08X50-12°	08mm	50mm
C428.08X55-12°	08mm	55mm
C428.08X60-12°	08mm	60mm
C428.10X40-12°	10mm	40mm
C428.10X45-12°	10mm	45mm
C428.10X50-12°	10mm	50mm
C428.10X55-12°	10mm	55mm
C428.10X60-12°	10mm	60mm
C428.12X40-12°	12mm	40mm
C428.12X45-12°	12mm	45mm
C428.12X50-12°	12mm	50mm
C428.12X55-12°	12mm	55mm
C428.12X60-12°	12mm	60mm
C428.14X40-12°	14mm	40mm
C428.14X45-12°	14mm	45mm
C428.14X50-12°	14mm	50mm
C428.14X55-12°	14mm	55mm
C428.14X60-12°	14mm	60mm
C428.16X40-12°	16mm	40mm
C428.16X45-12°	16mm	45mm
C428.16X50-12°	16mm	50mm
C428.16X55-12°	16mm	55mm
C428.16X60-12°	16mm	60mm

Refuzz
Cervical Interbody Fusion Device



C407
Cervical Cage

Titanium	Dia.	Length
C407.04x14	04mm	14mm
C407.05x14	05mm	14mm
C407.06x14	06mm	14mm
C407.07x14	07mm	14mm
C407.08x14	08mm	14mm

Titanium	Dia.	Length
C407.04x16	04mm	16mm
C407.05x16	05mm	16mm
C407.06x16	06mm	16mm
C407.07x16	07mm	16mm
C407.08x16	08mm	16mm

C419
Cervical Cage



PEEK	Dia.	Length
C419.04x14	04mm	14mm
C419.05x14	05mm	14mm
C419.06x14	06mm	14mm
C419.07x14	07mm	14mm
C419.08x14	08mm	14mm

Material : PEEK

PEEK	Dia.	Length
C419.04x16	04mm	16mm
C419.05x16	05mm	16mm
C419.06x16	06mm	16mm
C419.07x16	07mm	16mm
C419.08x16	08mm	16mm

Fuzion
Cervical Interbody Fusion Device



C409
Dio Cage Type

Titanium	Dia.	Length
C409.05x14	05mm	14mm
C409.06x14	06mm	14mm
C409.07x14	07mm	14mm
C409.08x14	08mm	14mm

Titanium	Dia.	Length
C409.05x16	05mm	16mm
C409.06x16	06mm	16mm
C409.07x16	07mm	16mm
C409.08x16	08mm	16mm

C410
Dio Cage Type



PEEK	Dia.	Length
C410.05x14	05mm	14mm
C410.06x14	06mm	14mm
C410.07x14	07mm	14mm
C410.08x14	08mm	14mm

Material : PEEK

PEEK	Dia.	Length
C410.05x16	05mm	16mm
C410.06x16	06mm	16mm
C410.07x16	07mm	16mm
C410.08x16	08mm	16mm

CRUST Cervical Interbody Fusion Device



C408
Cervical Cage (Re-Cage)

Titanium	Dia.	Length	Titanium	Dia.	Length
C408.04x14	04 mm	14 mm	C408.06x14	06 mm	14 mm
C408.04x16	04 mm	16 mm	C408.06x16	06 mm	16 mm
C408.05x14	05 mm	14 mm	C408.07x16	07 mm	16 mm
C408.05x16	05 mm	16 mm	C408.08x16	08 mm	16 mm

2M Stand-Alone Interbody Cage



C414
Cervical Cage with Screw

Material : Peek

PEEK	Dia.	Length	PEEK	Dia.	Length
C414.05x15	5.0mm	15mm	C414.07x15	7.0mm	15mm
C414.06x15	6.0mm	15mm	C414.08x15	8.0mm	15mm

2M-Pro Stand-Alone Interbody Cage



C425
Cervical Cage with Screw

Titanium	Dia.	Length	Titanium	Dia.	Length
C425.05x15	5.0mm	15mm	C425.08x15	8.0mm	15mm
C425.06x15	6.0mm	15mm	C425.09x15	9.0mm	15mm
C425.07x15	7.0mm	15mm	C425.10x15	10.0mm	15mm

2M+ Stand-Alone Interbody Cage



C413
Cervical Cage with Locking Screw

Titanium	Dia.	Length	Titanium	Dia.	Length
C413.05x15	5.0mm	15mm	C413.08x15	8.0mm	15mm
C413.06x15	6.0mm	15mm	C413.09x15	9.0mm	15mm
C413.07x15	7.0mm	15mm	C413.10x15	10.0mm	15mm



Cervical
Atlantoaxial Spacer



C415
Cervical Spacer

Titanium	Size	Length
C415.3.5	3.5 mm	15 mm
C415.4.5	4.5 mm	15 mm
C415.5.0	5.0mm	15 mm
C415.5.5	5.5 mm	15 mm
C415.6.0	6.0 mm	15 mm

X-PAN PRO
Vertebral Corpectomy Device



C420
X-PAN Pro - Expandable Cage

Titanium	Dia.	Length	Titanium	Dia.	Length
C420.12.20x25	12mm	20mm to 25mm	C420.16.20x25	16mm	20mm to 25mm
C420.12.25x35	12mm	25mm to 35mm	C420.16.25x35	16mm	25mm to 35mm
C420.12.35x45	12mm	35mm to 45mm	C420.16.35x45	16mm	35mm to 45mm
C420.12.45x60	12mm	45mm to 60mm	C420.16.45x60	16mm	45mm to 60mm
C420.14.20x25	14mm	20mm to 25mm	C420.18.20x25	18mm	20mm to 25mm
C420.14.25x35	14mm	25mm to 35mm	C420.18.25x35	18mm	25mm to 35mm
C420.14.35x45	14mm	35mm to 45mm	C420.18.35x45	18mm	35mm to 45mm
C420.14.45x60	14mm	45mm to 60mm	C420.18.45x60	18mm	45mm to 60mm



X-PAN+
Vertebral Corpectomy
Device



C418
Cervical Cage with Plate

Titanium	Dia.	Length
C418.12.18x23	12mm	18mm to 23mm
C418.12.23x28	12mm	23mm to 28mm
C418.12.28x35	12mm	28mm to 35mm
C418.12.35x50	12mm	35mm to 50mm

DELTA

Minimally Invasive Surgery



C501
Cannulated Polyaxial Screw
MIS Ø5.5mm

Titanium	Length
C501.25	25mm
C501.30	30mm
C501.35	35mm
C501.40	40mm
C501.45	45mm
C501.50	50mm

C502
Cannulated Polyaxial Screw
MIS Ø6.5mm

Titanium	Length
C502.25	25mm
C502.30	30mm
C502.35	35mm
C502.40	40mm
C502.45	45mm
C502.50	50mm

DELTA
Minimally Invasive Surgery



C503
Rod Ø5.5mm (Curved) MIS

Titanium	Length
C503.40	40mm
C503.45	45mm
C503.50	50mm
C503.55	55mm
C503.60	60mm
C503.70	70mm
C503.80	80mm

Titanium	Length
C503.90	90mm
C503.100	100mm
C503.120	120mm
C503.130	130mm
C503.140	140mm
C503.150	150mm



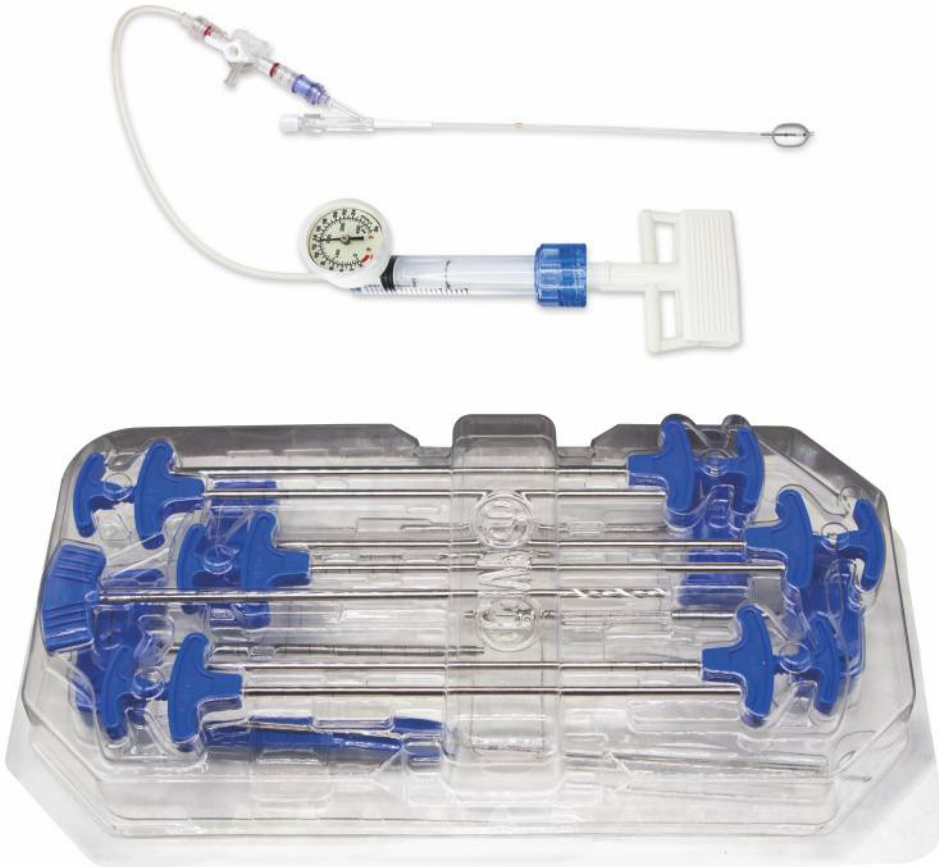
C504
Rod Ø5.5mm (Straight) MIS

Titanium	Length
C504.40	40mm
C504.45	45mm
C504.50	50mm
C504.55	55mm
C504.60	60mm
C504.70	70mm
C504.80	80mm
C504.90	90mm
C504.100	100mm

Titanium	Length
C504.120	120mm
C504.130	130mm
C504.140	140mm
C504.150	150mm
C504.160	160mm
C504.180	180mm
C504.200	200mm
C504.250	250mm
C504.300	300mm

BOOST

Vertebral Balloon
Kyphoplasty



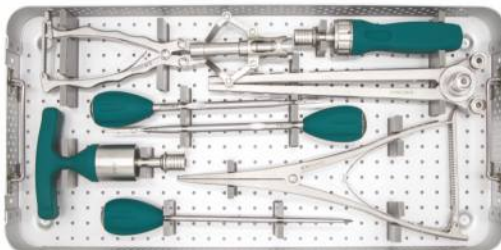
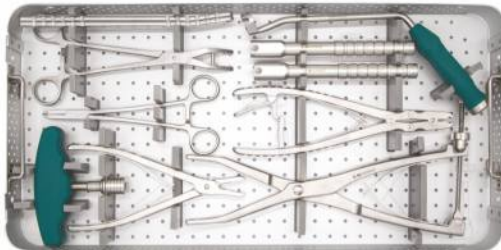
C2C61.01.10	Balloon Catheter 10mm (Sterile)	
C2C61.01.15	Balloon Catheter 15mm (Sterile)	
C2C61.01.20	Balloon Catheter 20mm (Sterile)	
C2C61.02	Balloon Inflation Device (Sterile)	1
C2C61.03	Cement Injection Device	6
C2C61.04	Dialator with Sleeved Cannula (Opurator/Cannula)	2
C2C61.05	Bone Drill	1
C2C61.06	Guide Wire	2
C2C61.07	Spoon	1
C2C61.08	Needle with Sharp Trocar Tip (Puncher Needle)	2
C2C61.00	Container	

SingleLock[®]
Spinal Fixation System

SingleLock-Osteo
HA Coated Screw for Osteoporosis Bone

DELTA-FEN
Fenestrated Screw for Osteoporosis Bone

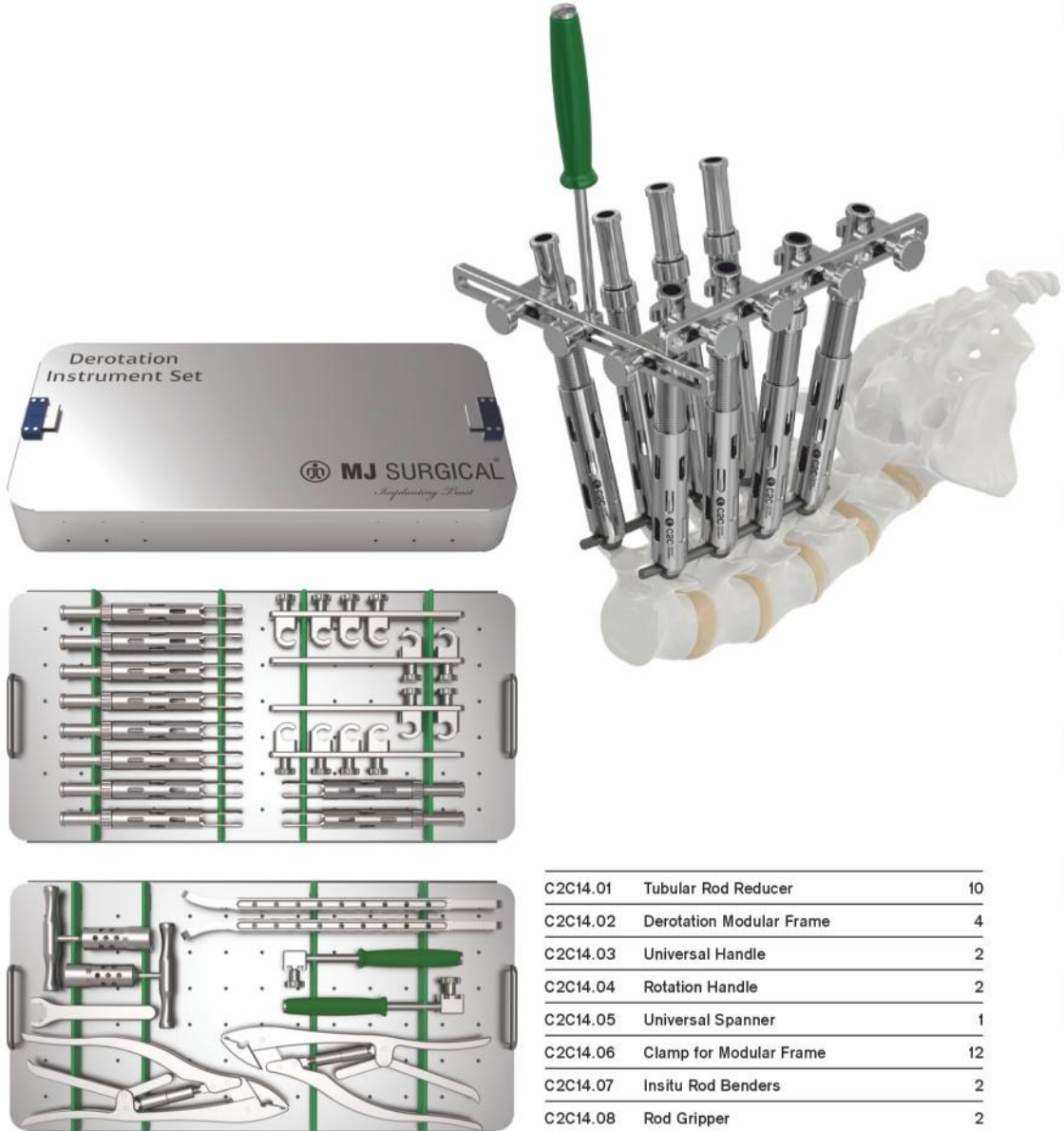
Solitaire
Dual Thread Screw



C2C11.01	Rod Rocker	1
C2C11.02	Rod Holder	1
C2C11.03	Feeler Probe (Straight)	1
C2C11.04	Feeler Probe (Curved)	1
C2C11.05	Inner Holder	1
C2C11.06	Rod Template	1
C2C11.07	Screwdriver for Monoaxial Screw	1
C2C11.08	Screwdriver for Polyaxial Screw	1
C2C11.09	Rod Rotator (L+R)	2
C2C11.10	Rod Pusher (Open)	1
C2C11.11	Tap for Pedicle Screw Ø4.5mm	1
C2C11.12	Tap for Pedicle Screw Ø5.5mm	1
C2C11.13	Tap for Pedicle Screw Ø6.5mm	1
C2C11.14	Rod Pusher (Close)	2
C2C11.15	Counter Torque	1
C2C11.16	Counter Torque for Reduction Screw Cutter	1
C2C11.17	T Handle Quick Coupling	1
C2C11.18	Inner Tightner - T30	2
C2C11.19	Pedicle Awl	1
C2C11.20	Torque Limiting Handle	1
C2C11.21	Pedicle Marker Pin Insertor	1
C2C11.22	Pedicle Marker Pin	6
C2C11.23	Ratchet Handle	1
C2C11.24	Pedicle Probe - Straight (Lumbar Probe)	1
C2C11.25	Pedicle Probe - Curved (Thoracic Probe)	1
C2C11.26	Rod Bender	1
C2C11.27	Reduction Screw Cutter	1
C2C11.28	Compressor	1
C2C11.29	Persuader	1
C2C11.30	Rod Gripper	1
C2C11.31	Distractor	1
C2C11.32	Reduction Screw Breaker	1
C2C11.35	Staple Holder and Driver	*
C2C11.36	Screwdriver for Polyaxial Screw Ø7.5mm	*
C2C11.37	Tap for Pedicle Screw Ø7.5mm	*
C2C11.38	T25 Shaft for Polyaxial Screw	1

*Available on request

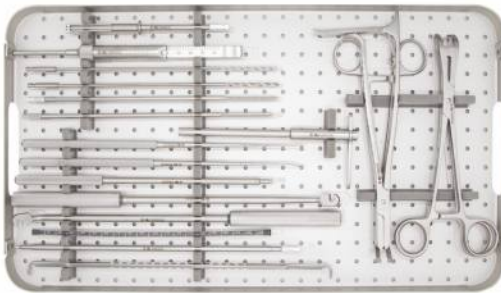
SingleLock
Deformity Correction System



C2C14.01	Tubular Rod Reducer	10
C2C14.02	Derotation Modular Frame	4
C2C14.03	Universal Handle	2
C2C14.04	Rotation Handle	2
C2C14.05	Universal Spanner	1
C2C14.06	Clamp for Modular Frame	12
C2C14.07	In situ Rod Benders	2
C2C14.08	Rod Gripper	2

Merit

Occipital Cervical Fixation System



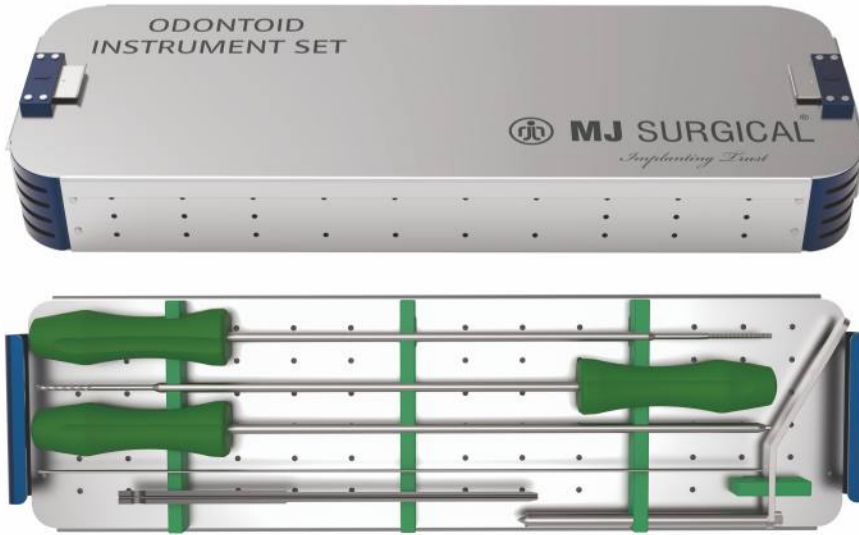
C2C21.01	Drill Sleeve	1
C2C21.02	Drill Bit Ø2.4mm & Ø2.7mm	2
C2C21.03	Screw Driver for Posterior Cervical Screw	1
C2C21.04	Inner Holder	1
C2C21.05	Tap Ø3.5mm	1
C2C21.06	Tap Ø4.0mm	1
C2C21.07	Inner Tightner	1
C2C21.08	Awl Pointed	1
C2C21.09	Awl Flat	1
C2C21.10	Marker Pin	6
C2C21.11	Marker Pin Inserter	1
C2C21.12	Quick Coupling Handle	1
C2C21.13	Rod Pusher	1
C2C21.14	Quick Coupling T Handle	1
C2C21.15	Rod Pusher (Close)	1
C2C21.16	Depth Gauge	1
C2C21.17	Sleeve	1
C2C21.18	Probe (Staright)	1
C2C21.19	Probe (Curved)	1
C2C21.20	Rod Holder	1
C2C21.21	Rod Rocker	1
C2C21.22	Rod Bender	1
C2C21.23	Rod Template	1
C2C21.24	Compressor	1
C2C21.25	Distractor	1
C2C21.26	Rod Cutter	1
C2C21.27	Rod Gripper	1
C2C21.28	Persuader	1
C2C21.29	Rod Bender	2
C2C21.30	Screw Holder with Sleeve	1
C2C21.31	Elevator	1
C2C21.32	Hook Holder	1

NEXUS
Laminoplasty Plate System



C2C22.01	Screw Driver	2
C2C22.02	Drill Bit 1.5x4mm	1
C2C22.03	Drill Bit 1.5x6mm	1
C2C22.04	Drill Bit 1.5x8mm	1
C2C22.05	Drill Bit 1.5x10mm	1
C2C22.06	Drill Bit 1.5x12mm	1
C2C22.07	Trial 4mm	1
C2C22.08	Trial 6mm	1
C2C22.09	Trial 8mm	1
C2C22.10	Trial 10mm	1
C2C22.11	Trial 12mm	1
C2C22.12	Bending/Cutting Pliers	2
C2C22.13	Holder for Miniplate	1
C2C22.14	Open Drill	1
C2C22.15	Lamina Elevator	2
C2C22.16	Implant Tray	1

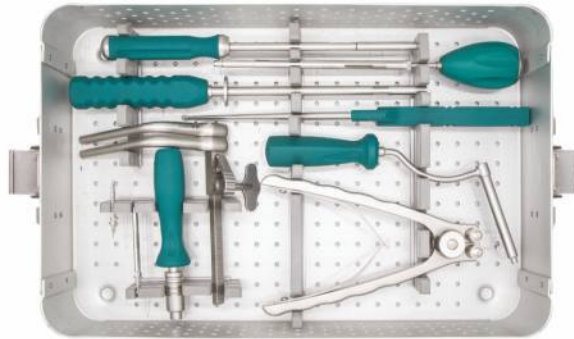
OT 
Odontoid and
Transarticular Screw Fixation



C2C23.01	Cannulated Tap	1
C2C23.02	Cannulated Drill	1
C2C23.03	Cannulated Screw Driver	1
C2C23.04	Sleeve	1
C2C23.05	Trocar	1
C2C23.06	Guide Wire	4
C2C23.07	Depth Gauge	1

STATELY®

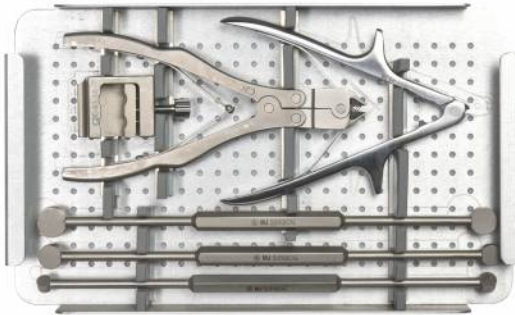
Anterior Cervical Plating System



C2C31.01	Bone Screw Holding Sleeve	2
C2C31.02	Screw Driver Shaft for Bone Screw Quick Coupling	2
C2C31.03	Plate Holder	1
C2C31.04	Shaft for Lock Screw Quick Coupling	1
C2C31.05	Drill Bit Quick Coupling Ø2.5mm	1
C2C31.06	Adjustable Tap Ø4.0mm	1
C2C31.07	Adjustable Drill Bit Ø2.5mm	2
C2C31.08	Distractor Screw Holder	1
C2C31.09	Curette 3mm	1

C2C31.10	Plate Holding Screw	2
C2C31.11	Distractor Screw	2
C2C31.12	Plate Bender	1
C2C31.13	Awl	1
C2C31.14	Plate Holding Screw Holder	1
C2C31.15	Quick Coupling Handle	1
C2C31.16	Drill Guide	1
C2C31.17	Implant Tray	1
C2C31.18	Cervical Distractor	1

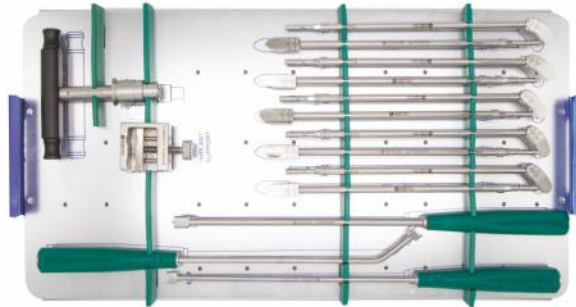
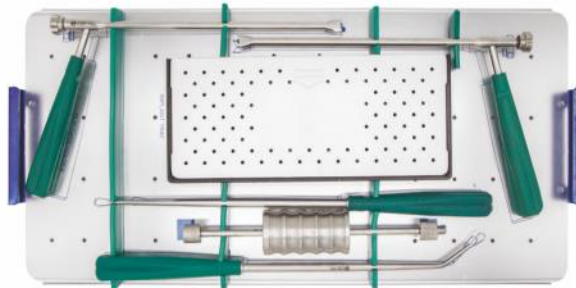
Mesh Cage Instrument Set



C2C47.01	Mesh Cage Holding Forcep	1
C2C47.02	Cage Cutter Small	1
C2C47.03	Cage Cutter Large	1
C2C47.04	Pusher Straight	1
C2C47.05	Pusher Curved	1
C2C47.06	Implant Sizer 10-12mm	1
C2C47.07	Implant Sizer 14-16mm	1
C2C47.08	Implant Sizer 18-20mm	1
C2C47.09	Osteotribe	1
C2C47.10	Implant Support	1
C2C47.11	Graft Pusher 6mm	1
C2C47.12	Graft Pusher 10mm	1
C2C47.13	Graft Pusher 14mm	1

TLIF / PLIF Cage Instruments Set

INSTRUMENTS



TLIF / PLIF Cage Instruments Set



C2C41.01	TLIF Cage Holder	1	C2C41.27	Cup Curette Straight	1
C2C41.02	Reamer 7mm	1	C2C41.28	Implant Support	1
C2C41.03	Reamer 8mm	1	C2C41.29	Cage Pusher	1
C2C41.04	Reamer 9mm	1	C2C41.30	Round Scraper 7mm	1
C2C41.05	Reamer 10mm	1	C2C41.31	Round Scraper 8mm	1
C2C41.06	Reamer 11mm	1	C2C41.32	Round Scraper 9mm	1
C2C41.07	Reamer 12mm	1	C2C41.33	Rotate Cutter Reamer 7.5x6.5	1
C2C41.08.C	Rasp Curved	1	C2C41.34	Rotate Cutter Reamer 8.5x7.5	1
C2C41.08.S	Rasp Straight	1	C2C41.35	Rotate Cutter Reamer 9.5x8.5	1
C2C41.09	Cage Pusher Straight	1	C2C41.36	Rotate Cutter Reamer 10x9.5	1
C2C41.10	Cage Pusher Curved	1	C2C41.37	Rotate Cutter Reamer 10.5x10	1
C2C41.11	Bone Curette Rectangular 6mm	1	C2C41.38	PLIF Cage Trial 7mm	1
C2C41.12	Bone Curette Rectangular 8mm	1	C2C41.39	PLIF Cage Trial 8mm	1
C2C41.13	Cup Curette Left	1	C2C41.40	PLIF Cage Trial 9mm	1
C2C41.14	Cup Curette Right	1	C2C41.41	PLIF Cage Trial 10mm	1
C2C41.15	TLIF Cage Trial 7mm	1	C2C41.42	PLIF Cage Trial 11mm	1
C2C41.16	TLIF Cage Trial 8mm	1	C2C41.43	PLIF Cage Trial 12mm	1
C2C41.17	TLIF Cage Trial 9mm	1	C2C41.44	TLIF Cage Trial 13mm	*
C2C41.18	TLIF Cage Trial 10mm	1	C2C41.45	TLIF Cage Trial 14mm	*
C2C41.19	TLIF Cage Trial 11mm	1	C2C41.46	TLIF Cage Trial 16mm	*
C2C41.20	TLIF Cage Trial 12mm	1	C2C41.47	PLIF Cage Trial 13mm	*
C2C41.21	Slap Hammer	1	C2C41.48	PLIF Cage Trial 14mm	*
C2C41.22	Quick Coupling T Handle	1	C2C41.49	PLIF Cage Trial 16mm	*
C2C41.23	Bone Curette Ring Type Curved	1	C2C41.50	Reamer 13mm	*
C2C41.24	Bone Curette Ring Type Straight	1	C2C41.51	Reamer 14mm	*
C2C41.25	Osteotome	1	C2C41.52	Reamer 16mm	*
C2C41.26	PLIF Cage Holder	1	C2C41.53	Implant Tray	1

*Available on request

OLIF

Oblique Lumbar Interbody Fusion Device



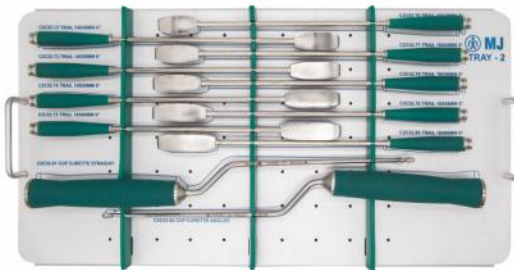
Retractor and Access Instruments Set

C2C52.01	Guide Wire	2
C2C52.02	Dilator Ø5.3mm	1
C2C52.03	Dilator Ø10.6mm	1
C2C52.04	Dilator Ø16mm	1
C2C52.05	Dilator Ø20.8mm	1
C2C52.06	Blade Pin Driver	1
C2C52.07	Blade Pin 9cm	2
C2C52.08	Blade Pin 10cm	2
C2C52.09	Blade Pin 11cm	2
C2C52.10	Blade Pin 12cm	2
C2C52.11	Blade Pin 13cm	2
C2C52.12	Blade Pin 14cm	2
C2C52.13	Blade Pin 15cm	2
C2C52.14	Blade Pin 16cm	2
C2C52.15	Blade Pin 17cm	2
C2C52.16	Retractor Blade Base Frame	1
C2C52.17	Retractor Blade 9cm (Right & Left)	2
C2C52.18	Retractor Blade 10cm (Right & Left)	2
C2C52.19	Retractor Blade 11cm (Right & Left)	2
C2C52.20	Retractor Blade 12cm (Right & Left)	2
C2C52.21	Retractor Blade 13cm (Right & Left)	2
C2C52.22	Retractor Blade 14cm (Right & Left)	2
C2C52.23	Retractor Blade 15cm (Right & Left)	2
C2C52.24	Retractor Blade 16cm (Right & Left)	2
C2C52.25	Retractor Blade 17cm (Right & Left)	2
C2C52.26	Rotating Flex Arm Attachment	1
C2C52.27	Flexible Arm	1
C2C52.28	Table Attachment	1
C2C52.29	Bed Rail Clamp	1
C2C52.30	Kerrison Punch 3mm	1
C2C52.31	Kerrison Punch 4mm	1
C2C52.32	Kerrison Punch 5mm	1
C2C52.33	Disc Forceps-Straight	1
C2C52.34	Disc Forceps-Upward	1
C2C52.35	Fiber Optic Cable	1

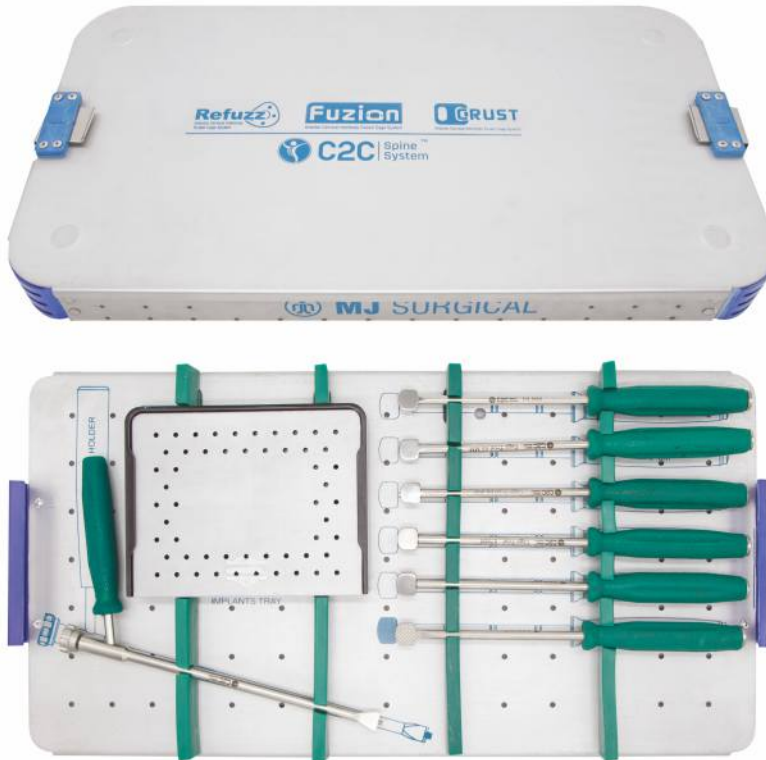
Disc Preparation Instruments Set

OLIF

Oblique Lumbar Interbody Fusion Device



C2C52.36	Combo Tool	1
C2C52.37	Angled Combo Tool	1
C2C52.38	Reverse Angle Combo Tool	1
C2C52.39	Rasp Flat	1
C2C52.40	Rasp Curved	1
C2C52.41	Straight Cobb 10mm	1
C2C52.42	Straight Cobb 18mm	1
C2C52.43	Distractor 6/8mm	1
C2C52.44	Distractor 8/10mm	1
C2C52.45	Distractor 10/12mm	1
C2C52.46	Shaver 8mm	1
C2C52.47	Shaver 10mm	1
C2C52.48	Shaver 12mm	1
C2C52.49	Shaver 14mm	1
C2C52.50	Shaver 16mm	1
C2C52.51	Ring Drill	1
C2C52.52	Quick Coupling T-Handle Cannulated	2
C2C52.53	Cage Inserter	1
C2C52.54	Cage Removal	1
C2C52.55	Slap Hammer	1
C2C52.56	Trial 8x40mm	1
C2C52.57	Trial 8x45mm	1
C2C52.58	Trial 8x50mm	1
C2C52.59	Trial 8x55mm	1
C2C52.60	Trial 8x60mm	1
C2C52.61	Trial 10x40mm	1
C2C52.62	Trial 10x45mm	1
C2C52.63	Trial 10x50mm	1
C2C52.64	Trial 10x55mm	1
C2C52.65	Trial 10x60mm	1
C2C52.66	Trial 12x40mm	1
C2C52.67	Trial 12x45mm	1
C2C52.68	Trial 12x50mm	1
C2C52.69	Trial 12x55mm	1
C2C52.70	Trial 12x60mm	1
C2C52.71	Trial 14x40mm	1
C2C52.72	Trial 14x45mm	1
C2C52.73	Trial 14x50mm	1
C2C52.74	Trial 14x55mm	1
C2C52.75	Trial 14x60mm	1
C2C52.76	Trial 16x40mm	1
C2C52.77	Trial 16x45mm	1
C2C52.78	Trial 16x50mm	1
C2C52.79	Trial 16x55mm	1
C2C52.80	Trial 16x60mm	1
C2C52.81	Cup Curette Straight	1
C2C52.82	Cup Curette Angled	1



C2C44.01	Implants Tray	1
C2C44.02	Trial 4mm	1
C2C44.03	Trial 5mm	1
C2C44.04	Trial 6mm	1
C2C44.05	Trial 7mm	1
C2C44.06	Trial 8mm	1
C2C44.07	Rasp	1
C2C44.08	Implants Holder	1

2M ^{CAD} Stand-Alone Interbody Cage

2M-Pro ^{CAD} Stand-Alone Interbody Cage

2M+ ^{CAD} Stand-Alone Interbody Cage



C2C45.01	Implant Tray	1
C2C45.02	Trial 5mm	1
C2C45.03	Trial 6mm	1
C2C45.04	Trial 7mm	1
C2C45.05	Trial 8mm	1
C2C45.06	Trial 9mm	1
C2C45.07	Trial 10mm	1
C2C45.08	Rasp	1
C2C45.09	Entry Punch Awl	1
C2C45.10	Cage Holder for 2m & 2m-pro	1
C2C45.11	Cage Holder for 2m+	1
C2C45.12	Bone Graft Pusher	1
C2C45.13	Drill Sleeve for 2m & 2m-pro	1
C2C45.14	Drill Sleeve for 2m+	1
C2C45.15	Drill Bit with Handle	1
C2C45.16	Screw Driver with Sleeve for Bone Screw	2
C2C45.17	Top Screw Driver for 2m	1



C2C43.01	Cage Holder	1
C2C43.02	Screw Driver for Lock Screw	1
C2C43.03	Cage Expander Driver	1
C2C43.04	Cage Pusher for 12 & 14mm	1
C2C43.05	Cage Pusher for 16 & 18mm	1
C2C43.06	Screw Driver for Bone Screw with Sleeve	2
C2C43.07	Entry Awl	1
C2C43.08	Drill for Bone Screw	1
C2C43.09	Drill Guide	1
C2C43.10	Lock Screw Driver	2
C2C43.11	Bone Graft Pusher	1
C2C43.12	Implant Tray	1

DELTA

Minimally Invasive Surgery



C2C51.31	Guide Wire	6
C2C51.32	Jamshidi Needle	2
C2C51.33	Dilator	5
C2C51.34	Awl	1
C2C51.35	Tap Ø5.5mm	1
C2C51.36	Tap Ø6.5mm	1
C2C51.37	Pedicle Finder	1
C2C51.38	Tower	6
C2C51.39	Screw Driver	2
C2C51.40	Inner Holder + Reducer	2
C2C51.41	Inner Tightner	2
C2C51.42	Rod Reducer	2
C2C51.43	Inner Holder	1
C2C51.44	Universal Handle	1
C2C51.45	Universal Spanner	1
C2C51.46	Anti Torque	1
C2C51.47	Rod Tester	1
C2C51.48	Wanding Blade	1
C2C51.49	Rod Holder	2
C2C51.50	Rod Measuring Device	1
C2C51.52	Compressor Distractor	1
C2C51.53	C/d Device	1
C2C51.54	Allen Key	1
C2C51.55	Straight Handle	1
C2C51.56	T-handle Quick Coupling	1
C2C51.57	Torque Limiting Handle	1
C2C51.58	Ratchet Handle	1
C2C51.59	Shaft Screw Driver	1
C2C51.60	T Handle Ratchet	*

*Available on request

SRS Spinal Retractor System



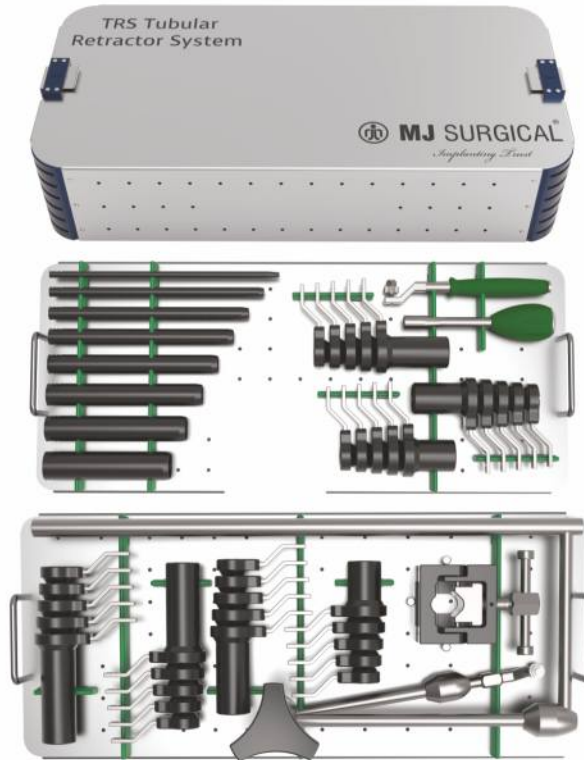
C2C12.01	Dilator	7
C2C12.02	Retractor Blade (Right & Left)	3
C2C12.03	Rack for Retractor Blade	1
C2C12.04	Medial Lateral Blade (Right & Left)	3
C2C12.05	Rack for Medial Lateral Blade	1
C2C12.06	Flexible Arm Attachment	1
C2C12.07	Flexible Arm	1
C2C12.08	Table Attachment	1
C2C12.09	Graphical Case	1
C2C12.10	Blade Wrench Opener	2

 **CRS** Cervical Retractor System



C2C32.01	23x30 Blade with Teeth	4
C2C32.02	23x40 Blade with Teeth	4
C2C32.03	23x50 Blade with Teeth	4
C2C32.04	23x60 Blade with Teeth	4
C2C32.05	23x70 Blade with Teeth	4
C2C32.11	Double Hinged Retractor Frame	1
C2C32.12	Step Down Double Hinged Retractor Frame	1
C2C32.13	Retractor Blade Handle	2

TRS
Tubular Retractor System



C2C53.01	Dilator	ID1.8 X OD7 - L 225mm	1	C2C53.26	Access Tube	ID22mm X 60mm	1
C2C53.02	Dilator	ID7 X OD10 - L 210mm	1	C2C53.27	Access Tube	ID22mm X 70mm	1
C2C53.03	Dilator	ID10 X OD13 - L 195mm	1	C2C53.28	Access Tube	ID22mm X 80mm	1
C2C53.04	Dilator	ID13 X OD16 - L 180mm	1	C2C53.29	Access Tube	ID22mm X 90mm	1
C2C53.05	Dilator	ID16 X OD19 - L 165mm	1	C2C53.30	Access Tube	ID25mm X 30mm	1
C2C53.06	Dilator	ID19 X OD22 - L 150mm	1	C2C53.31	Access Tube	ID25mm X 40mm	1
C2C53.07	Dilator	ID22 X OD25 - L 135mm	1	C2C53.32	Access Tube	ID25mm X 50mm	1
C2C53.08	Dilator	ID25 X OD28 - L 120mm	1	C2C53.33	Access Tube	ID25mm X 60mm	1
C2C53.09	Access Tube	ID16mm X 30mm	1	C2C53.34	Access Tube	ID25mm X 70mm	1
C2C53.10	Access Tube	ID16mm X 40mm	1	C2C53.35	Access Tube	ID25mm X 80mm	1
C2C53.11	Access Tube	ID16mm X 50mm	1	C2C53.36	Access Tube	ID25mm X 90mm	1
C2C53.12	Access Tube	ID16m X 60mm	1	C2C53.37	Access Tube	ID28mm X 30mm	1
C2C53.13	Access Tube	ID16m X 70mm	1	C2C53.38	Access Tube	ID28mm X 40mm	1
C2C53.14	Access Tube	ID16mm X 80mm	1	C2C53.39	Access Tube	ID28mm X 50mm	1
C2C53.15	Access Tube	ID16mm X 90mm	1	C2C53.40	Access Tube	ID28mm X 60mm	1
C2C53.16	Access Tube	ID19mm X 30mm	1	C2C53.41	Access Tube	ID28mm X 70mm	1
C2C53.17	Access Tube	ID19mm X 40mm	1	C2C53.42	Access Tube	ID28mm X 80mm	1
C2C53.18	Access Tube	ID19mm X 50mm	1	C2C53.43	Access Tube	ID28m X 90mm	1
C2C53.19	Access Tube	ID19mm X 60mm	1	C2C53.44	Table Attachment		1
C2C53.20	Access Tube	ID19mm X 70mm	1	C2C53.45	Bed Rail Clamp		1
C2C53.21	Access Tube	ID19mm X 80mm	1	C2C53.46	Fiber Optic Cable		*
C2C53.22	Access Tube	ID19mm X 90mm	1	C2C53.47	Universal Handle		1
C2C53.23	Access Tube	ID22mm X 30mm	1	C2C53.48	Spanner		1
C2C53.24	Access Tube	ID22mm X 40mm	1	C2C53.49	Light Source		*
C2C53.25	Access Tube	ID22mm X 50mm	1				

*Available on request



Phase-1, Plot No. 283, Road No. 3,
GIDC Kathwada, Ahmedabad-382430
Gujarat, India

+91-98795 86742 | 99090 86742 | +91-79-29701970

E-mail - info@mjsurgical.com

Web - www.mjsurgical.com

Doc. No. MJS-F-PC-02, Issue No: 01, Revision No.: 00